



CG | UNNATI CULTURAL VILLAGE

• Art • Craft • Literature • Cuisine

A CHAUDHARY | FOUNDATION Initiative

GENESIS OF DIVINE

Preservation, Conservation & Creation

Bijaya Maharjan | Meena Kayastha | Subodh Bhandari | Sambridhi R Shakya | Sushila Singh | Uma Shankar Shah

INDIA ART FAIR
DELHI6—9 FEB 2025



Genesis Of Divine (G.O.D)

Curated by Roshan Bhandari

UNNATI, a unique initiative by the Chaudhary Foundation, caters to the economic growth, evolution of heritage, and living knowledge systems of Nepal. As the abbreviation suggests, it is the focal point for Upscaling National, Natural, Artistic, and Traditional Industries. UNNATI's philosophy of revival entails the survival of national heritage through forms of arts, crafts, dance, music, foods, language, and habitat, encompassing the philosophy of life by which civilizations once thrived in culture and traditions. The essence is to bring the lost and found, old and new, back into our everyday lives.

Nepal flourishes as a nurturing hub for diverse artistic expressions, and the Unnati serves as a program under the Chaudhary Foundation for preserving these vital forms within the realms of heritage and cultural protection. It provides a platform for a wide range of artistic initiatives, including visual arts, literature, music, dance, theatre, and more. These expressions, which are inextricably linked to Nepal's cultural essence, spread their influence throughout South Asia, fostering a shared cultural bond.

The "Genesis of Divine" in Nepali art is a detailed study of how divinity is conceptualized, expressed, and experienced via diverse artistic mediums. From ancient history, traditional practices of art, monuments, sculptures and paintings to contemporary artistic manifestations, Nepali art provides a rich and diversified depiction of the divine that is strongly anchored in the country's cultural and spiritual legacy. Nepal's vibrant art reflects the country's rich cultural past as well as the expertise of its artists. The delicate intricacies of stories that are profoundly ingrained in traditional and cultural contexts are explored, investigated, and reflected upon by six Nepali artists.

Bijaya Maharjan | Meena Kayastha | Subodh Bhandari | Sambridhi R Shakya | Sushila Singh | Uma Shankar Shah.

Their creations are interwoven into a story that highlights the significance of Nepali cultural heritage and the artistic legacy of Nepali artisans. Printmaking, installation, Junk art, and contemporary sculpture are examples of media that serve as languages for artists to reflect, documentation, and convey their opinions and observations of cultural customs, rituals, and everyday life that are associated with Genesis of Divine.



Bijaya Maharjan

The series of contemporary sculptures in bronze dedicated to AJIMA, the revered Newari goddess of motherhood and protection, Maharjan conveys the divine energy, strength, warmth and compassion that AJIMA embodies. Through the work and process he aims to celebrate the essence of divine feminine, inviting viewers to experience the same sense of connection, protective grace and inspiration which guided him during the creation.



Ajima I
Bronze
H 24 x w 11 x D 16 inches



Ajima II
Bronze
H 32 x W 14 x D 18 inches



Ajima III
Bronze
H 19 x W 6 x D 4 inches



Garuda
Mixed media
H 34 x W 24 x D 8 inches



Meena Kayastha

Meena invites viewers to reflect on the eternal rhythms of creation, preservation, and destruction that permeate all existence by blending the symbolism of the divinity with sustainable practices. She also hopes to provoke thought about the interconnectedness of all things, encouraging a deeper understanding of the divine processes that are ever-present into our lives. Her works are the testament to the belief that the art is immortal, especially when it draws from the overlooked and the forgotten, transforming them into something sacred and enduring. Meena's current work, inspiring her to delve into these divine functions through her work. The project centers on a traditional Newari wooden door, a century old, serving as both canvas and symbol. This door, weathered by time yet enduring, represent the passage of life's phase- a metaphor for the cycles of creation, preservation, and destruction that govern both the cosmos and individual experiences.



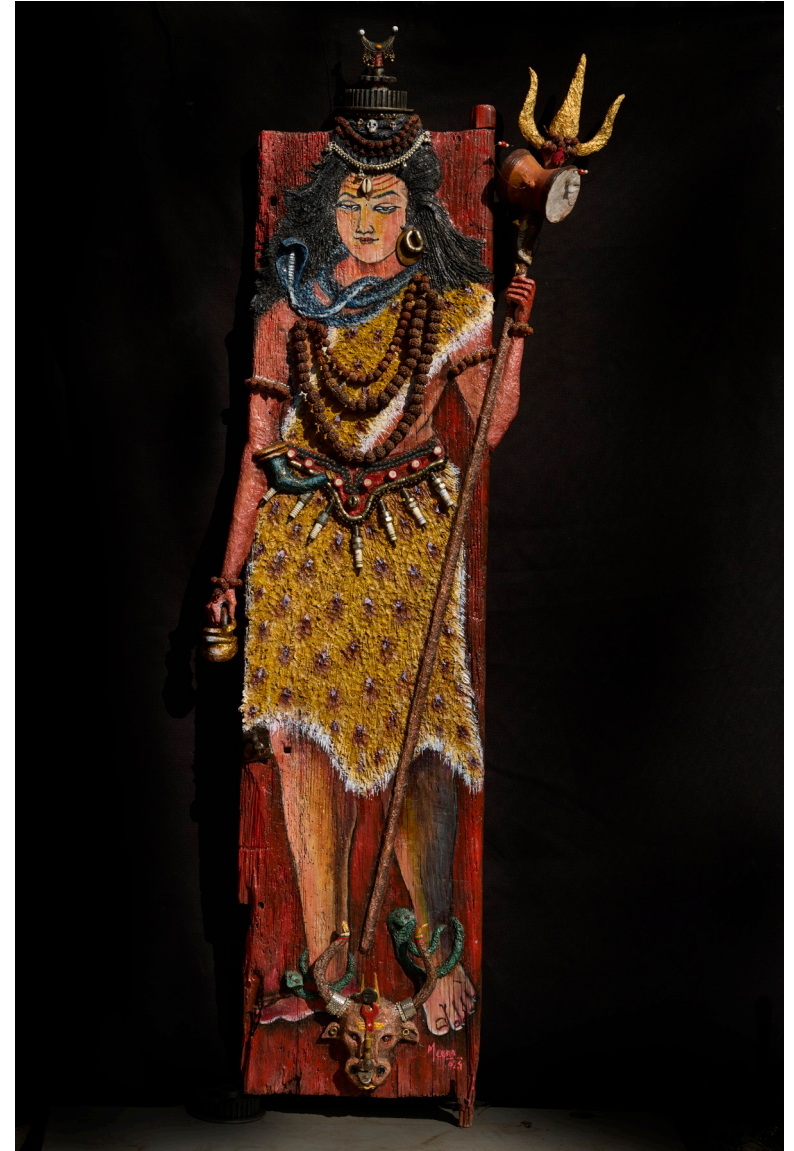
Brahma

Mixed media on traditional wooden door
H 69 x W 26 x D 7 inches



Vishnu

Mixed media on traditional wooden door
H 66 x W 24 x D 14 inches



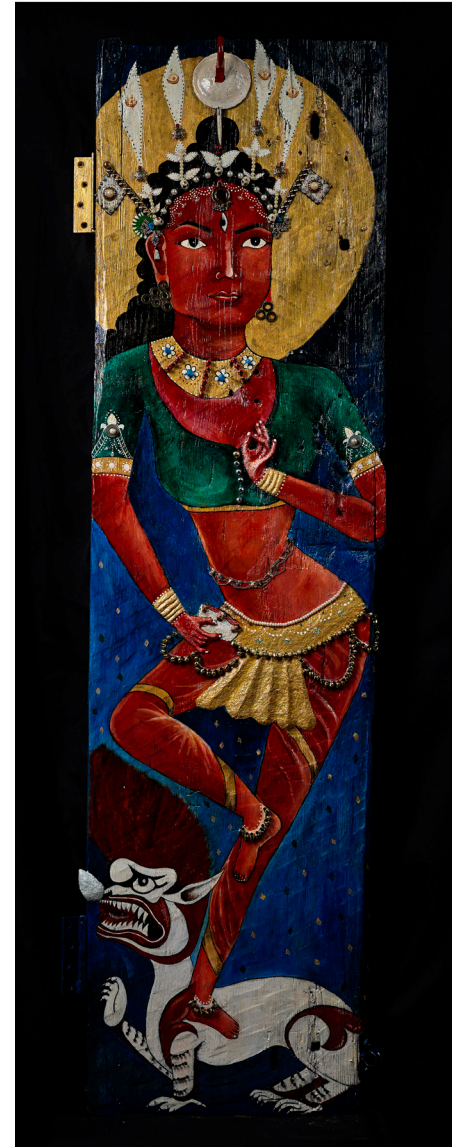
Maheshwor

Mixed media on traditional wooden door
H 62 x W 25 x D 10 inches



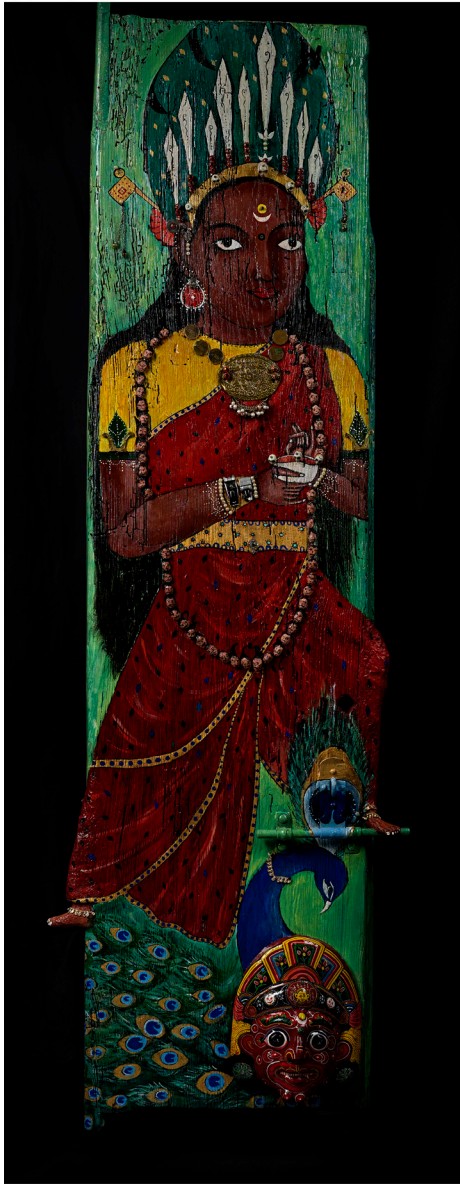
Ganesha

Mixed media on traditional wooden door
H 63 x W 24 x D 7 inches



Mahalaxmi

Mixed media on traditional wooden door
H 56 x W 17 x D 4 inches



Kaumari

Mixed media on traditional wooden door
H 58 x W 19 x D 8 inches



Sambridhi R Shakya & Subodh Bhandari

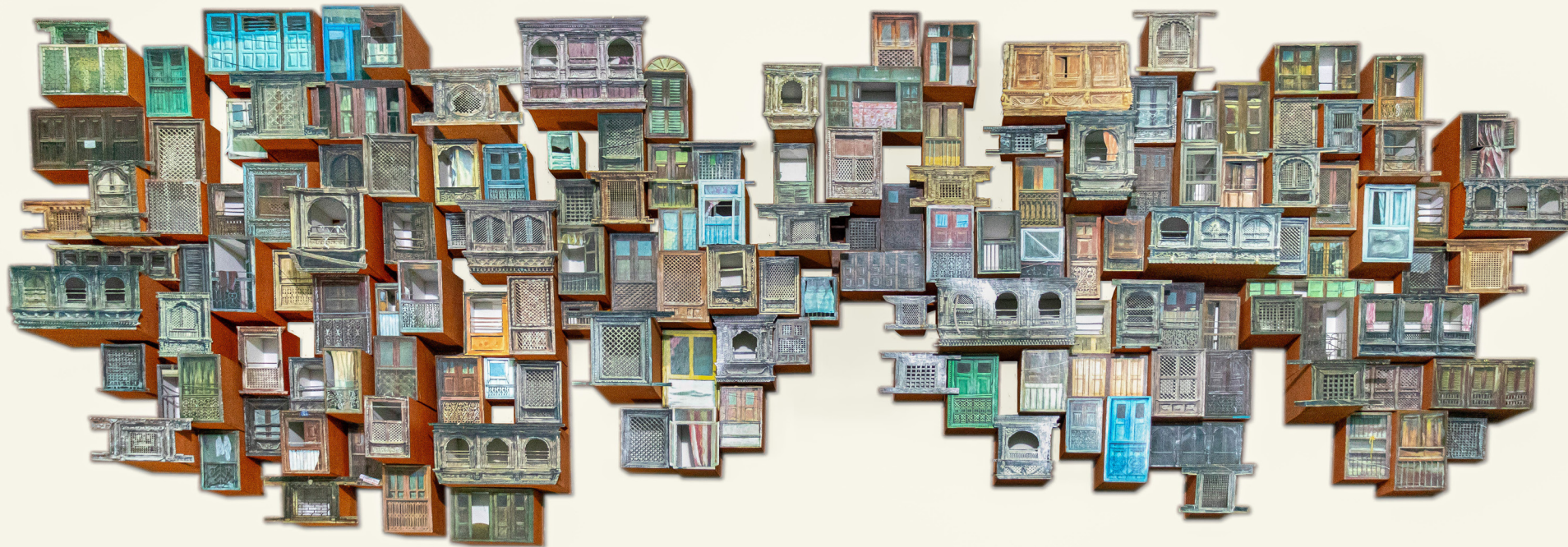
Sambridhi and Subodh are young, emerging, and visionary artists who collaborate to create thought-provoking art installations inspired by Nepali historical monuments. Their works, while contemporary in approach, resonate deeply with the themes of preserving Nepali art and architecture.

Through their installations, they breathe new life into traditional elements such as historical windows, doors, "Khopas" or niches, and other architectural details, offering a unique dialogue between the past and present. Their artistry not only reflects their innovative mindset but also highlights the significance of safeguarding Nepal's rich cultural heritage.



Fragments of Faith
Mixed media Installation
Variable





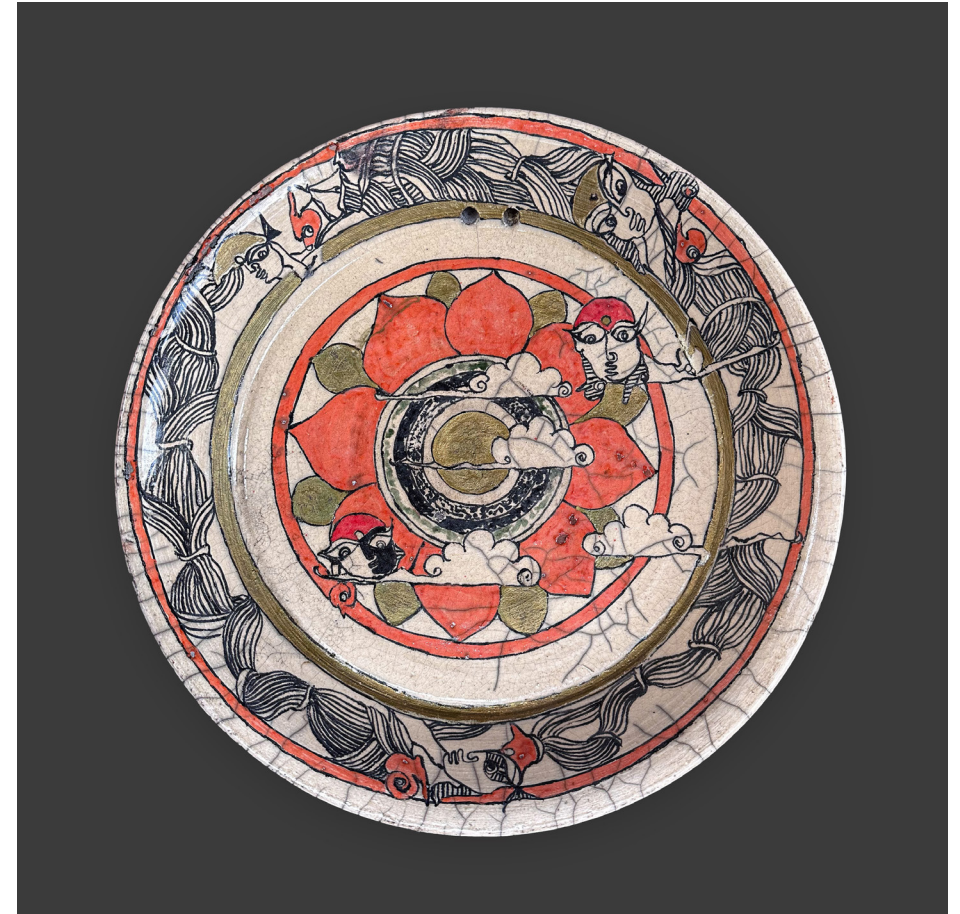
Odyssey of a City
Mixed media Installation
Variable





Sushila Singh

Sushila's fundamental element in this artistic journey is clay, a primordial substance that embodies the essence of the earth. In her work as a medium, clay signifies not just one of the five elemental forces, but also malleability and transformation. The clay serves as the canvas for narratives of self-discovery. The ceramic pieces are embellished with detailed doodles in gold and gray, colors chosen for their profound symbolic meaning. Gold, which is typically connected with divinity, blends with gray, the hue of contemplation, and emptiness.



Genesis of Self Discovery I

Ceramic stain, Raku, Gold Application
9 x 2.5 inches



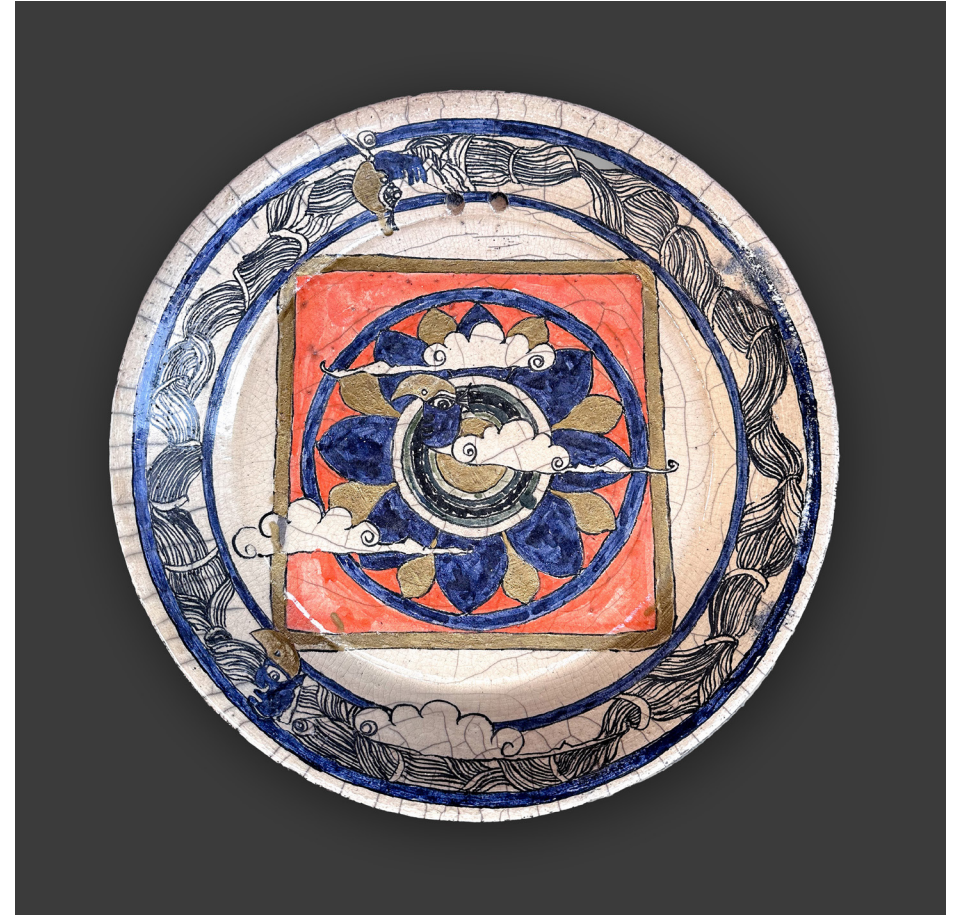
Genesis of Self Discovery II
Ceramic stain, Raku, Gold Application
9 x 2.5 inches



Genesis of Self Discovery III
Ceramic stain, Raku, Gold Application
9 x 2.5 inches



Genesis of Self Discovery IV
 Ceramic stain, Raku, Gold Application
 9 x 2.5 inches



Genesis of Self Discovery V
 Ceramic stain, Raku, Gold Application
 9 x 2.5 inches



Uma Shankar Shah

Uma Shankar's print series, *Ramayan*, is a visual retelling of the epic Ramayana, deeply rooted in the artist's hometown of Janakpur, Nepal. The series explores the life of Sita, the beloved princess and daughter of King Janak, from her birth and engagement to Lord Ram, to her banishment, kidnapping, and eventual rescue. Anchored in Mithila tradition and folklore, the prints feature elements of local culture, such as Sita's wedding in a kobarghar and her boat guided by fish. The artist's use of vibrant colors and the iconic doe-like eyes typical of Mithila art enriches the narrative. Through symbols of warfare and the traditional firework puppet of Ravana, Uma Shankar evokes the victory of good over evil, drawing on regional languages and Ramayana slokas to bring the epic to life.



Lok Ramayan
Etching and Mix Media
25 x 25 inches



Ramayan Katha
Etching and Mix Media
50 x 25 inches



Vivah Panchami
Etching and Mix Media
25 x 50 inches



Folk story
Etching and Mix Media
80 x 20 inches

Acknowledgement

Surabhi Chaudhary
Executive Director / Founder
Unnati Cultural Village

Suresh Raj Pandit
Chief Executive Officer
Chaudhary Foundation

Unnati Cultural Village Team
Bidhya Shrestha
Ganesh Gautam
Ishwori Nepali
Janaki Pradhan
Loojala Manandhar
Roshan Bhandari
Roshana Shrestha
Sujal Khatri
Vineeta Kumari Thapa



CG | UNNATI CULTURAL VILLAGE

• Art • Craft • Literature • Cuisine

A CHAUDHARY FOUNDATION Initiative

Harkapur, Gaindakot Municipality - 12
Nawalpur, Gandaki Province, Nepal

www.unnaticulturalvillage.com
cgunnati@gmail.com
+977 9707093995 | +977 9851203903



  [unnaticulturalvillage](#)